

POMAX

SOUL IN *your* HOME



FABRICS GUIDE 2026



Stitching stories

Our fabrics are suitable for **personal and professional use**. That is why it includes a wide range of covering fabrics.

This collection is versatile and can be used for **sofas** only. However, it's important to note that not every fabric is suitable for every type of furniture.

Our textiles are categorized by quality and pricing. To find the perfect match for your needs, refer to the labels on page 3 and choose the category that best suits your needs.



Easy to clean

At the production stage, the fibres are covered with a special finish that protects the fabric from dirt penetration. Thanks to this, all stains are quickly and efficiently cleaned.

Liquid-repelling surfaces

A technology of covering the fabric with a special hydrophobic coating that effectively avoids the absorption of spilled liquids, leaving drops on the surface of the material.

The environment in our mind

Recycled fabrics demonstrate our planet's care by sustainably cutting water and electricity use and lowering CO₂ emissions.

Linen, a natural fabric

Linen is a natural fabric and not UV-resistant, so to preserve its beauty we recommend limiting prolonged exposure to direct sunlight.

Fabrics suitable for sofas Pippa & Lulu

Loose covers for Pippa, fixed and loose ones for Lulu.
Made of 100% linen.



Oyster (cat 6)



Oatmeal (cat 6)



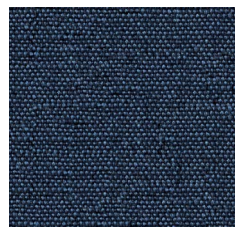
Curry (cat 5)



Caffè (cat 5)



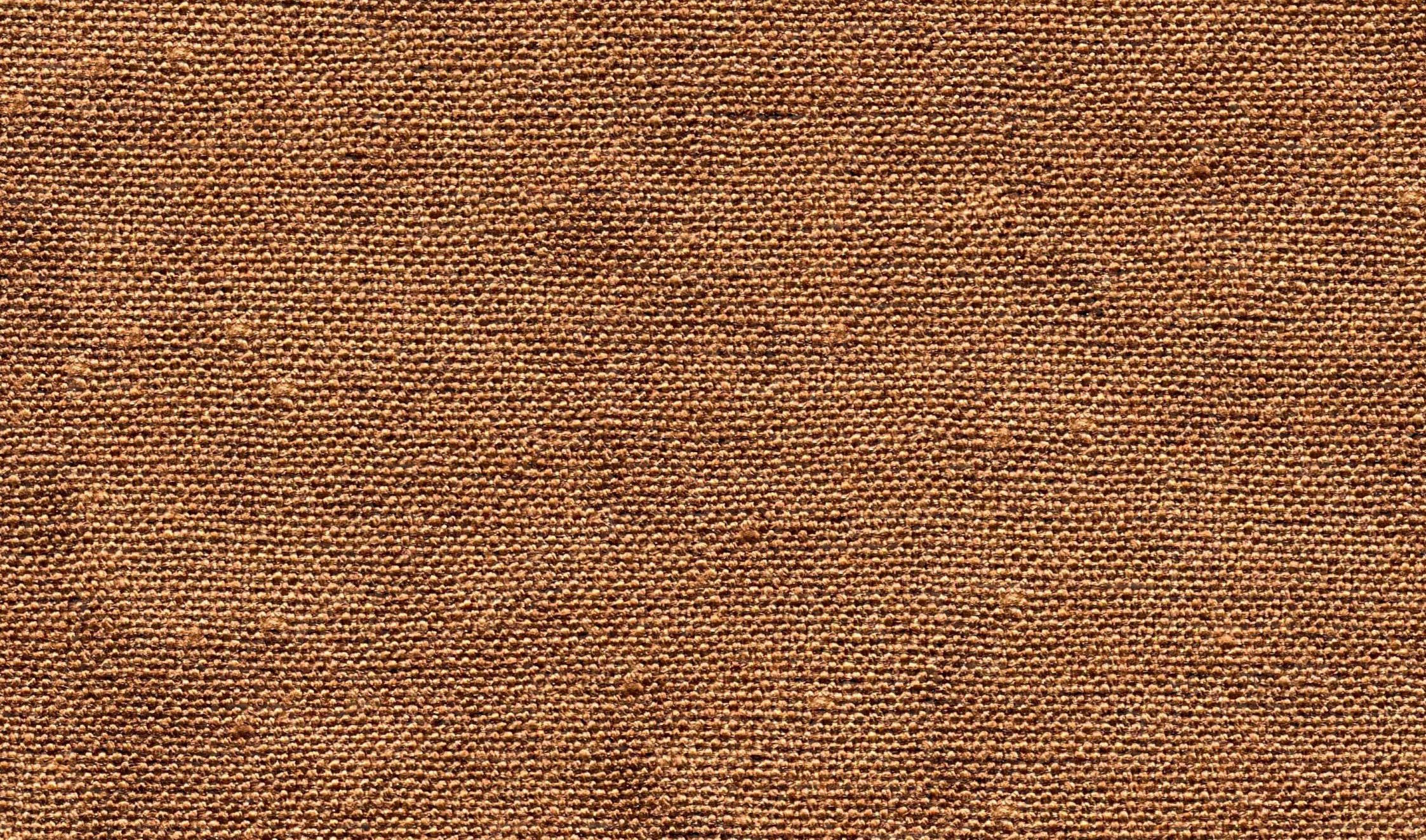
Pioppo (cat 6)



Purofino (cat 9)



SOFA PIPPA - FABRIC OYSTER



Oyster – cat 6



PIPPA
LULU

loose cover
fixed & loose cover

MATERIAL
MARTINDALE TEST
EXTRA

100% linen
> 30.000 cycles
Made in Belgium (Libeco)



Oatmeal – cat 6

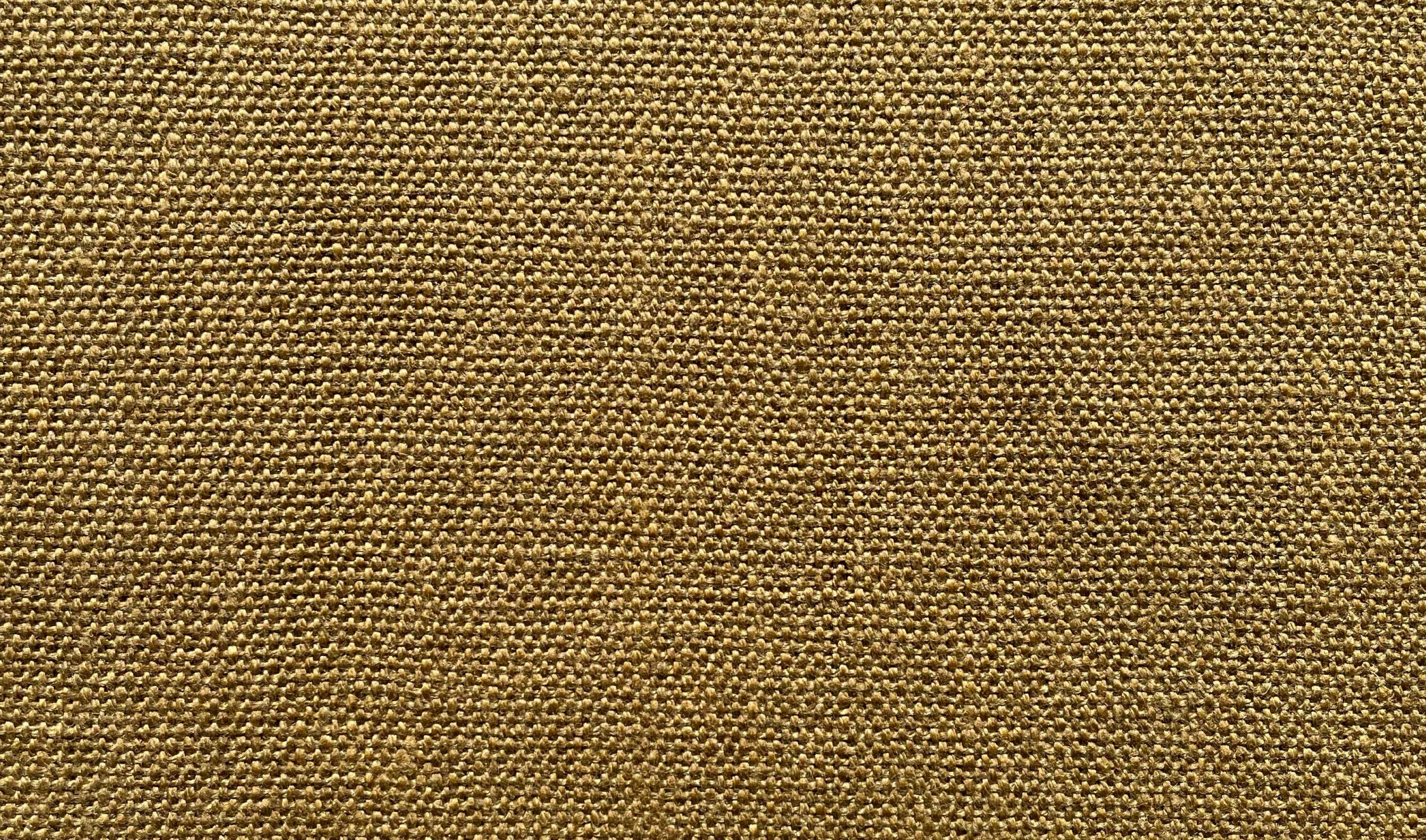


**PIPPA
LULU**

loose cover
fixed & loose cover

**MATERIAL
MARTINDALE TEST
EXTRA**

100% linen
25.000 cycles
Made in Belgium (Libeco)



Curry – cat 5

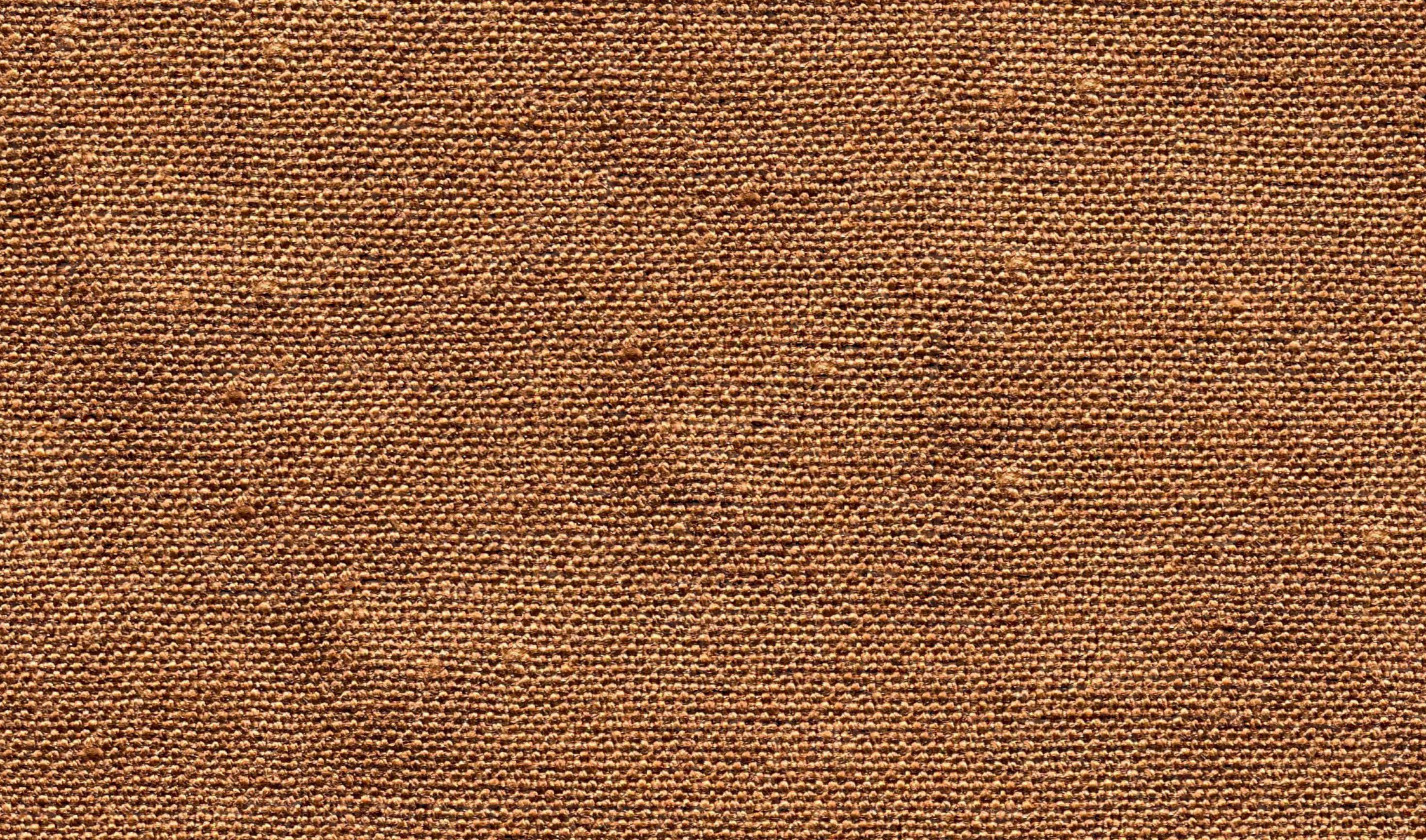


**PIPPA
LULU**

loose cover
fixed & loose cover

**MATERIAL
MARTINDALE TEST
EXTRA**

100% linen
20.000 cycles
Made in Italy



Caffe – cat 5

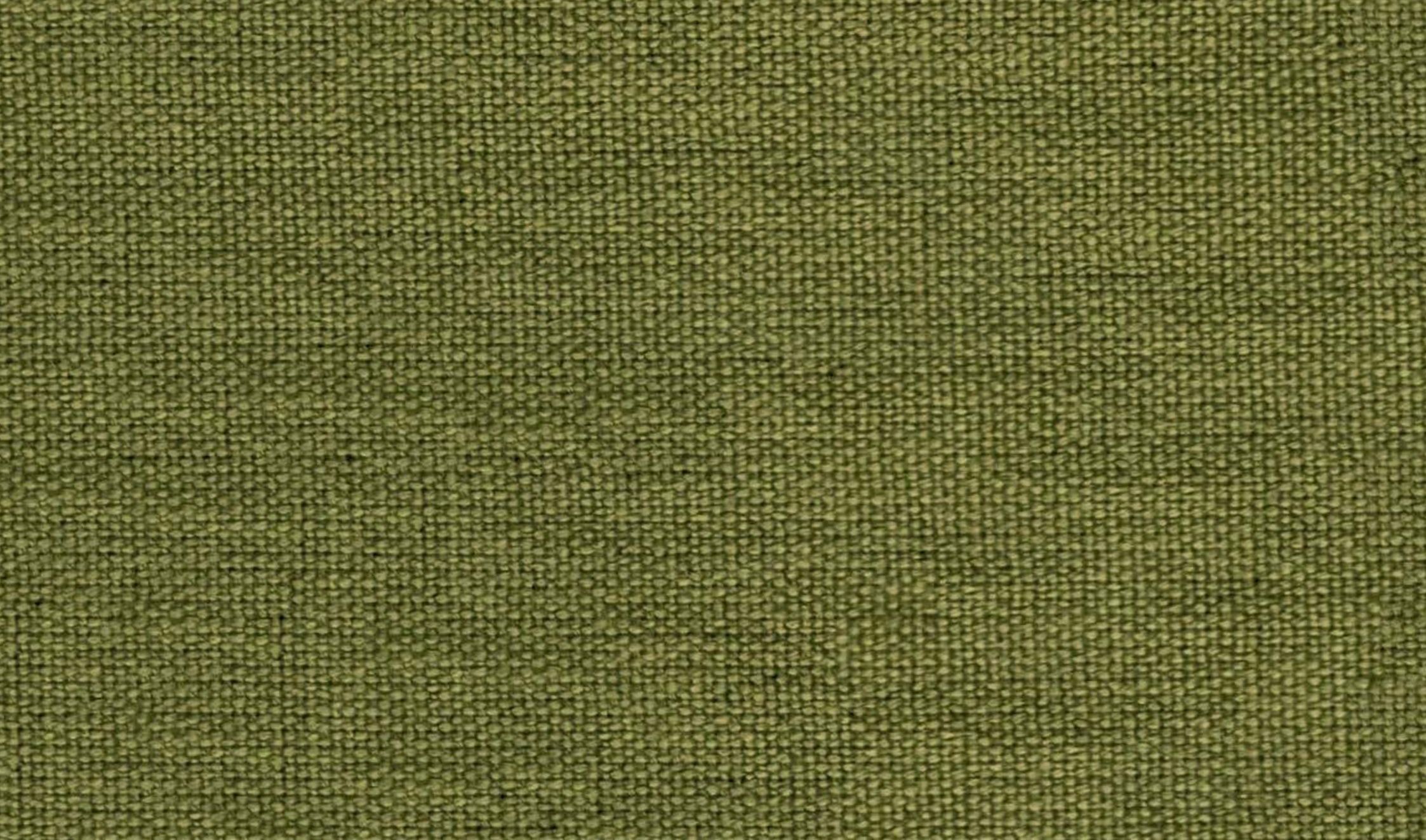


**PIPPA
LULU**

loose cover
fixed & loose cover

**MATERIAL
MARTINDALE TEST
EXTRA**

100% linen
20.000 cycles
Made in Italy



Pioppo – cat 6



PIPPA
LULU

loose cover
fixed & loose cover

MATERIAL
MARTINDALE TEST
EXTRA

100% linen
20.000 cycles
Made in Italy



Purolino – cat 9



**PIPPA
LULU**

loose cover
fixed & loose cover

**MATERIAL
MARTINDALE TEST
EXTRA**

100% linen
20.000 cycles
Made in Italy

Fabrics suitable for sofas Toronto & Brower

Fixed covers only.



Abriamo (cat 1)



Enjoy Me 01 (cat 1)



Lincoln 03 (cat 1)



Bloom 06 (cat 2)



Nebbia 09 (cat 2)



Angola 10 (cat 3)



Enjoy Me 19 (cat 1)



Tulia 05 (cat 2)



Enjoy Me 20 (cat 1)



Vamos 08 (cat 3)



Angola 11 (cat 3)



Enjoy Me 13 (cat 1)



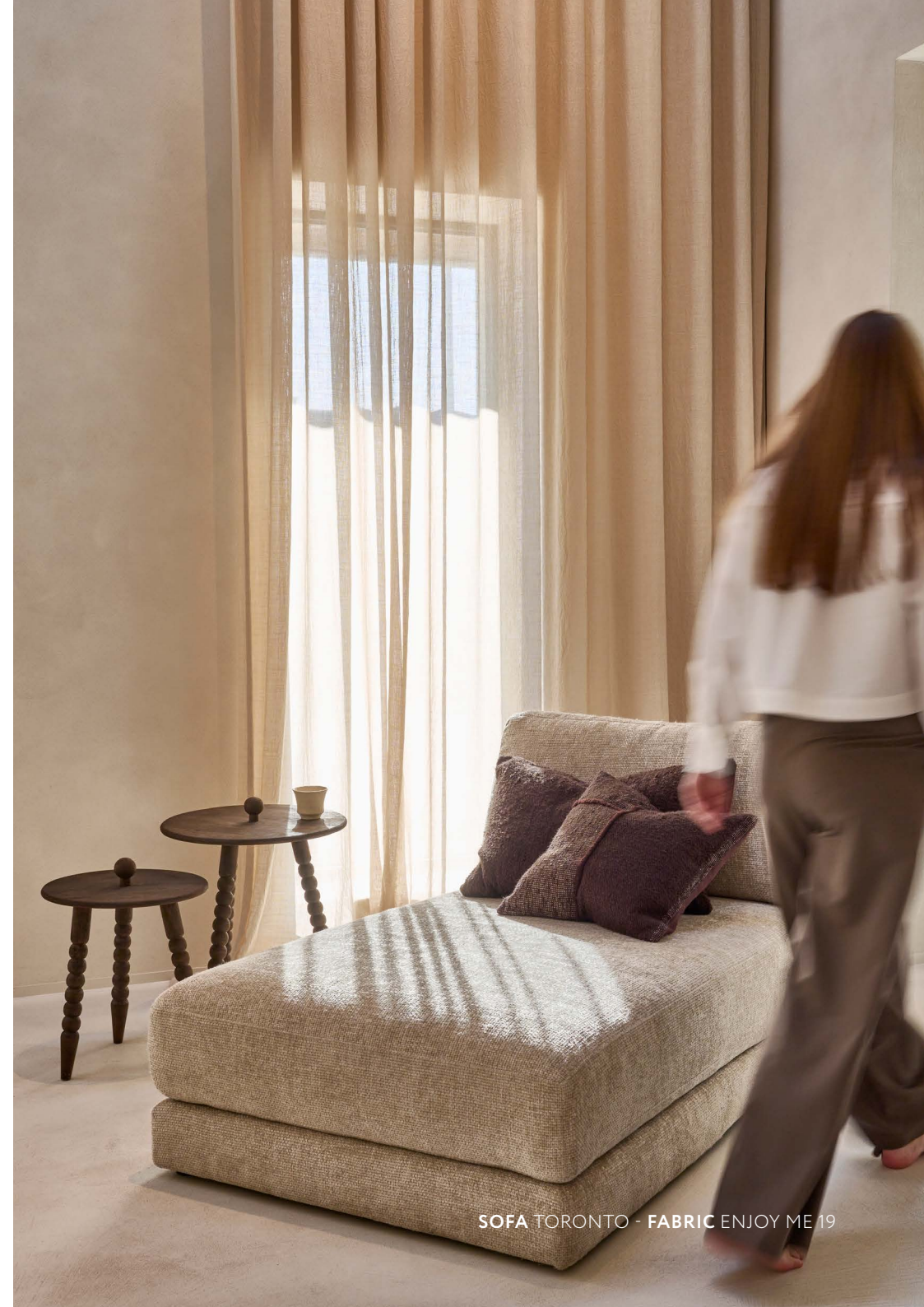
Vamos 07 (cat 3)



Tulia 10 (cat 2)



Vamos 12 (cat 3)



SOFA TORONTO - FABRIC ENJOY ME 19



Abriamo – cat 1

SOFAS

Toronto + Brower

MATERIAL
MARTINDALE TEST
FIRE RETARDANT

100% polyester
45.000 cycles
BS 5852: Part 1: 1979 source 0
(cigarette test)



Enjoy Me 01 – cat 1

SOFAS

Toronto + Brower

MATERIAL
MARTINDALE TEST
FIRE RETARDANT

100% polyester
100.000 cycles
BS 5852: Part 1: 1979 source 0
(cigarette test)



Lincoln 03 – cat 1

SOFAS

Toronto + Brower

MATERIAL
MARTINDALE TEST
FIRE RETARDANT

100% polyester
100.000 cycles
BS 5852: Part 1: 1979 source 0
(cigarette test)



Bloom 06 – cat 2



SOFAS

Toronto + Brower

MATERIAL
MARTINDALE TEST
FIRE RETARDANT

93% polyester, 7% cotton
50.000 cycles
BS 5852: Part 1: 1979 source 0
(cigarette test)



Nebbia 09 – cat 2



SOFAS

Toronto + Brower

MATERIAL
MARTINDALE TEST
FIRE RETARDANT

100% polyester
43.000 cycles
BS 5852: Part 1: 1979 source 0
(cigarette test)



Angola 10 – cat 3



SOFAS

Toronto + Brower

MATERIAL

68% polyamide, 29% polyester,
3% viscose

**MARTINDALE TEST
FIRE RETARDANT**

50.000 cycles
BS 5852: Part 1: 1979 source 0
(cigarette test)



Enjoy Me 19 – cat 1

SOFAS

Toronto + Brower

MATERIAL
MARTINDALE TEST
FIRE RETARDANT

100% polyester
100.000 cycles
BS 5852: Part 1: 1979 source 0
(cigarette test)



Tulia 05 – cat 2



SOFAS

Toronto + Brower

MATERIAL
MARTINDALE TEST
FIRE RETARDANT

100% polyester
90.000 cycles
BS 5852: Part 1: 1979 source 0
(cigarette test)



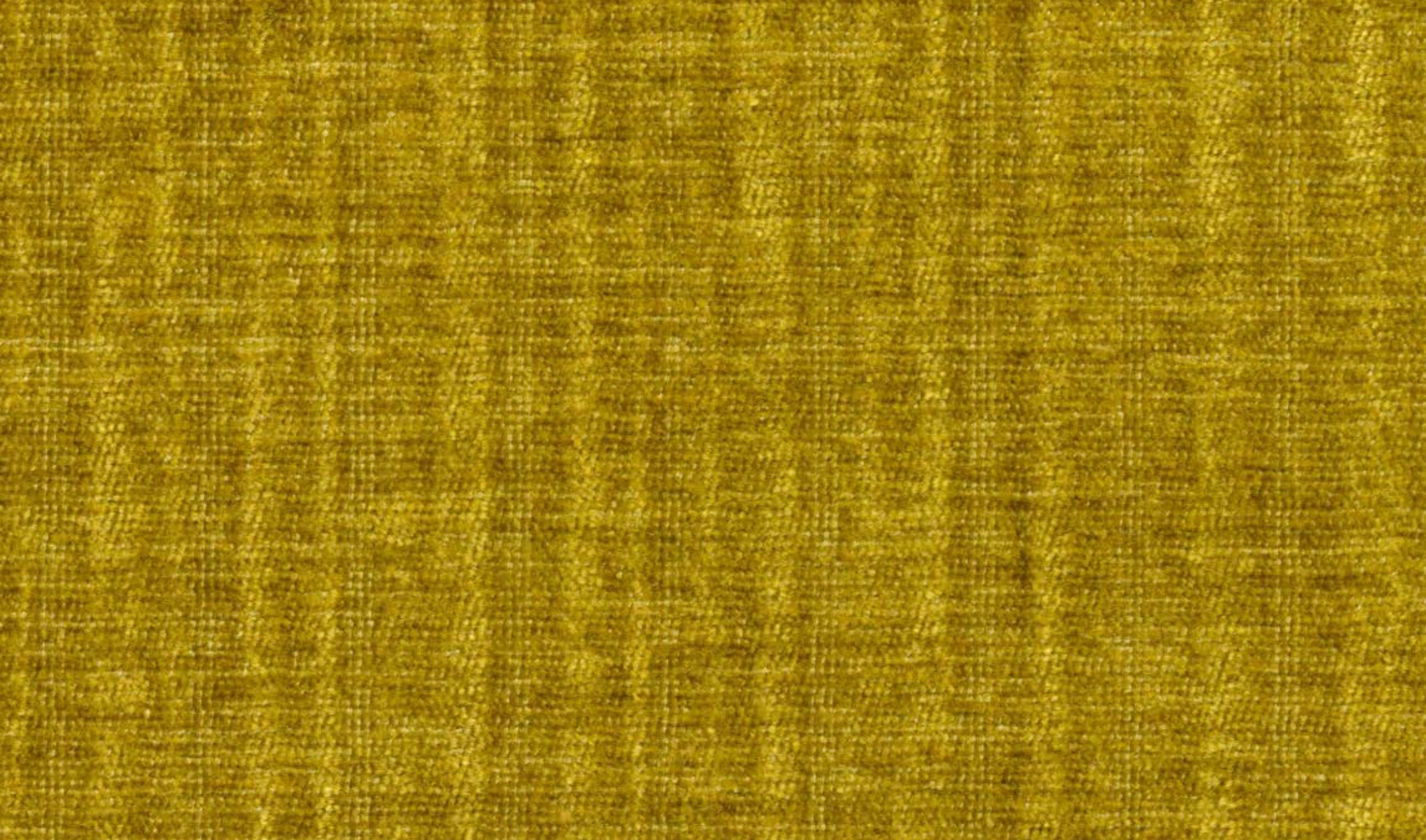
Enjoy Me 20 – cat 1

SOFAS

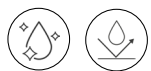
Toronto + Brower

MATERIAL
MARTINDALE TEST
FIRE RETARDANT

100% polyester
100.000 cycles
BS 5852: Part 1: 1979 source 0
(cigarette test)



Vamos 08 – cat 3



SOFAS

Toronto + Brower

MATERIAL

**MARTINDALE TEST
FIRE RETARDANT**

47% polyester, 45% polyamide,
8% viscose
35.000 cycles
BS 5852: Part 1: 1979 source 0
(cigarette test)



Angola 11 – cat 3



SOFAS

Toronto + Brower

MATERIAL

68% polyamide, 29% polyester,
3% viscose

**MARTINDALE TEST
FIRE RETARDANT**

50.000 cycles
BS 5852: Part 1: 1979 source 0
(cigarette test)



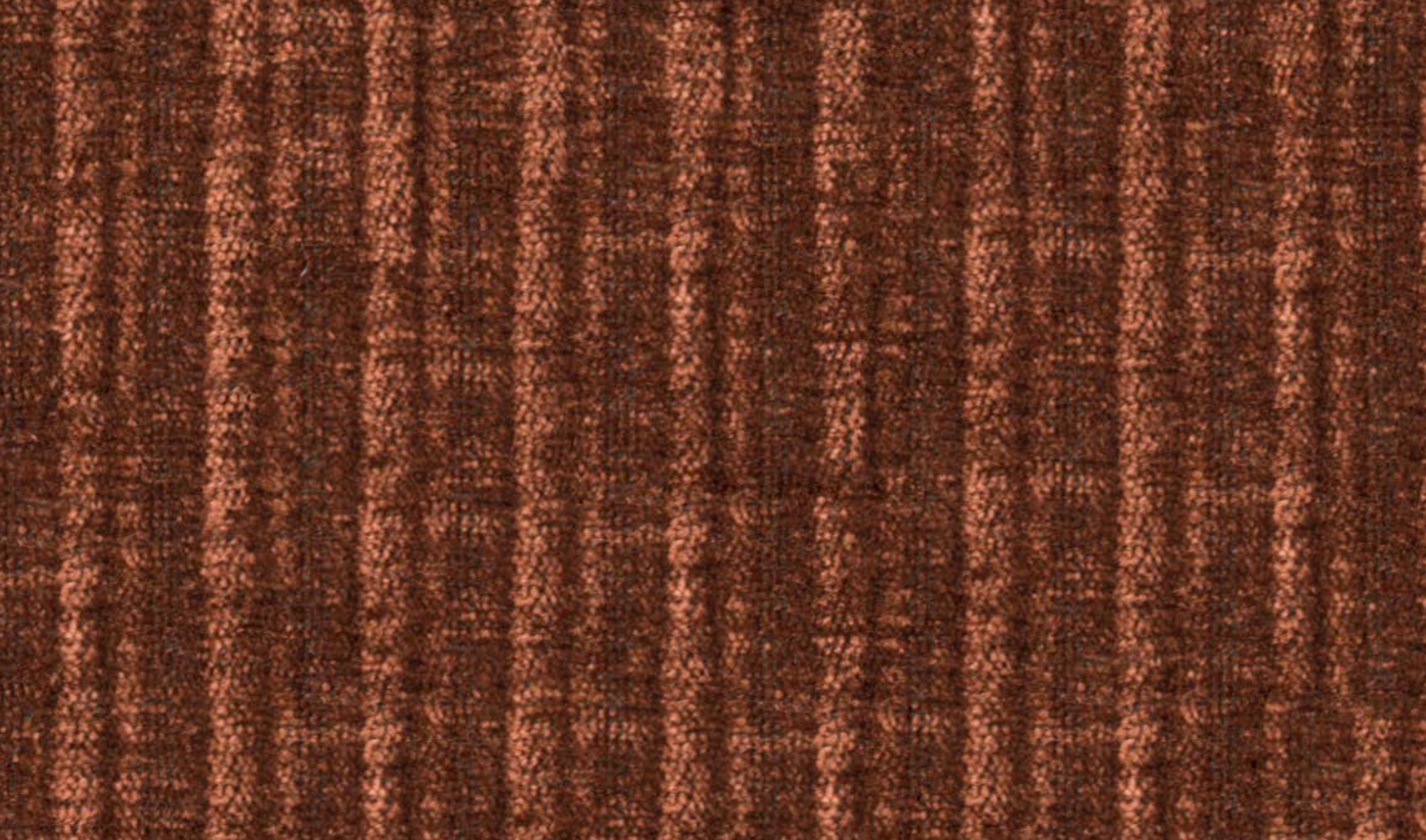
Enjoy Me 13 – cat 1

SOFAS

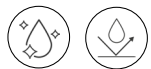
Toronto + Brower

MATERIAL
MARTINDALE TEST
FIRE RETARDANT

100% polyester
100.000 cycles
BS 5852: Part 1: 1979 source 0
(cigarette test)



Vamos 07 – cat 3



SOFAS

Toronto + Brower

MATERIAL

47% polyester, 45% polyamide,
8% viscose

**MARTINDALE TEST
FIRE RETARDANT**

35.000 cycles
BS 5852: Part 1: 1979 source 0
(cigarette test)



Tulia 10 – cat 2

SOFAS

Toronto + Brower

MATERIAL
MARTINDALE TEST
FIRE RETARDANT

100% polyester
90.000 cycles
BS 5852: Part 1: 1979 source 0
(cigarette test)



Vamos 12 – cat 3



SOFAS

Toronto + Brower

MATERIAL

47% polyester, 45% polyamide,
8% viscose

**MARTINDALE TEST
FIRE RETARDANT**

35.000 cycles
BS 5852: Part 1: 1979 source 0
(cigarette test)



OEKO-TEX®
CONFIDENCE IN TEXTILES
STANDARD 100 
20.HPL.17915 HOHENSTEIN HTTI
Tested for harmful substances.
www.oeko-tex.com/standard100

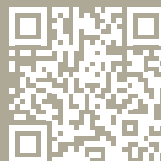
OEKO-TEX is a certificate that confirms high quality and safety of textile products that is awarded by an independent research institute.

Textiles that have been tested for presence of harmful substances, are free from prohibited chemicals, PFC, allergenic dyes, azodyes and heavy metals.

OEKO-TEX proves that our products are safe and do not constitute hazard to their users and the natural environment.

POMAX

SOUL IN *your* HOME



FABRICS GUIDE 2026
www.pomax.com